

# BASE LITE



BASE LITE è una tenda a bracci estensibili con cassonetto a scomparsa totale su supporti laterali fissi con contropiastra di ancoraggio, bracci a doppio cavetto inguainato o a catena inox. I supporti consentono di installare la tenda sia a parete che a soffitto e dispongono inoltre di una vite di microregolazione per consentire un corretto accoppiamento dei profili.



BASE LITE is a fully cassetted folding arm awning on fixed independent side brackets and wall installation plate with double covered cable or stainless chain arms. The brackets let this model to be installed either on the wall or on the ceiling and they have a microregulation screw that allows a perfect matching of the profiles.



BASE LITE est une store a cassette complètement fermée avec bras extensibles fixé sur deux supports latéraux et plaques de fixation ,bras à doubles cables gainés ou chaîne inox. Les supports consentent un montage au mur ou plafond et dispose d'une microrégulation pour obtenir un accouplement parfait des profils.



BASE LITE Kassettenmarkise, Doppelseil- oder Kettenarme, Wand - oder Deckenmontage mittels Grundplatte möglich. Die Kasette besteht aus drei einzelnen Profilen, welche durch eine Mikroregulierung aufeinander abgestimmt werden.



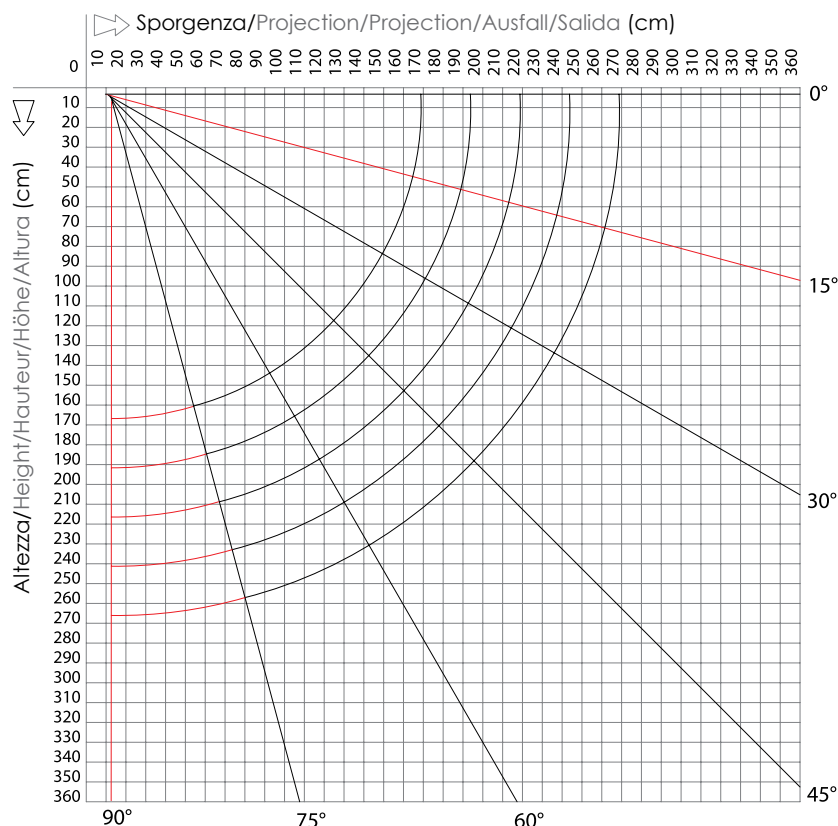
BASE LITE es un toldo cofre con brazos extensibles sobre soportes laterales fijos con contraplaca de anclaje, brazos con doble cadena acero inox. Los soportes permiten instalar el toldo a pared o a techo y diponen tambien de un tornillo para la microregulacion para permitir un correcto acoplamiento de los perfiles.

# BASE LITE

## SCHEDA TECNICA/technical sheet



### Diagramma di copertura - Installazione parete e soffitto Covering diagram - Wall and ceiling installation



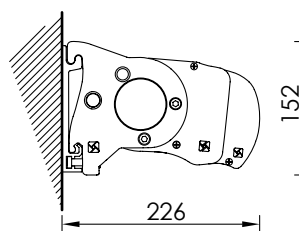
■ Diagramma di copertura a parete 0° - 75° - Wall covering diagram 0° - 75°

■ Diagramma di copertura a soffitto 15° - 90° - Ceiling covering diagram 15° - 90°

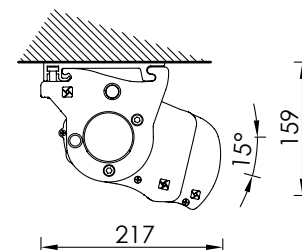
### Dimensioni massime - Maxi dimensions



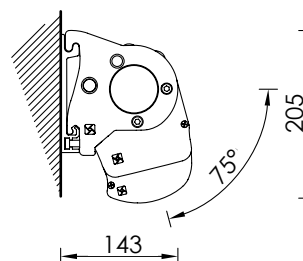
Montaggio a parete 0°  
Wall installation 0°



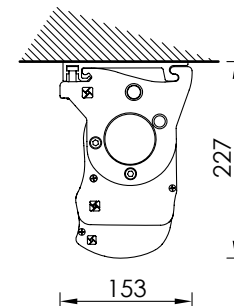
Montaggio a soffitto 15°  
Ceiling installation 15°



Montaggio a parete 75°  
Wall installation 75°



Montaggio a soffitto 90°  
Ceiling installation 90°



Ingombri minimi della tenda finita - 1 coppia bracci  
Minimum awning encumbrances - 1 pair arms  
Encombrenents minimum du store fini - 1 pair bras  
Mindestabmessungen der Markise - 1 Paar Gelenkarme  
Tamaño mínimo del toldo - 1 pareja de brazos

| Sporgenza<br>Projection<br>Avancée<br>Ausladung<br>Salida | Larghezza min.<br>Min. Width<br>Largeur min.<br>Breite min.<br>Línea mín. |
|---|---|
| 160   | 187   |
| 185   | 210   |
| 210   | 236   |
| 235   | 260   |
| 260   | 286   |